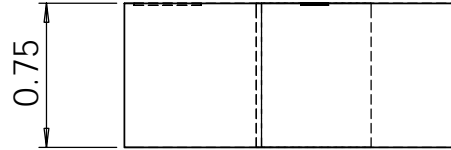
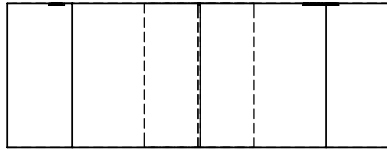


		REVISIONS		
ZONE	REV.	DESCRIPTION	DATE	APPROVED
	B	Added label and chamfer note	5/25/05	AO
	C	Added note to engrave serial number & single point turn	11/30/06	AO

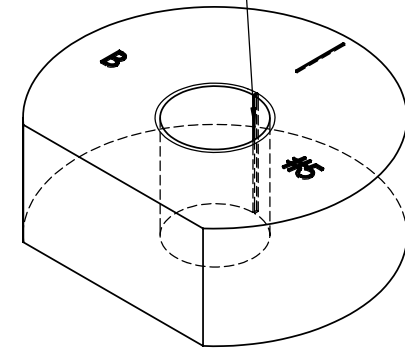
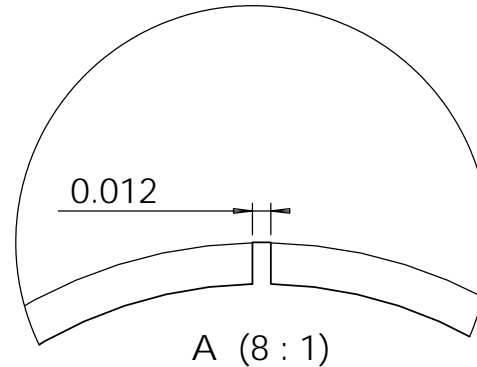
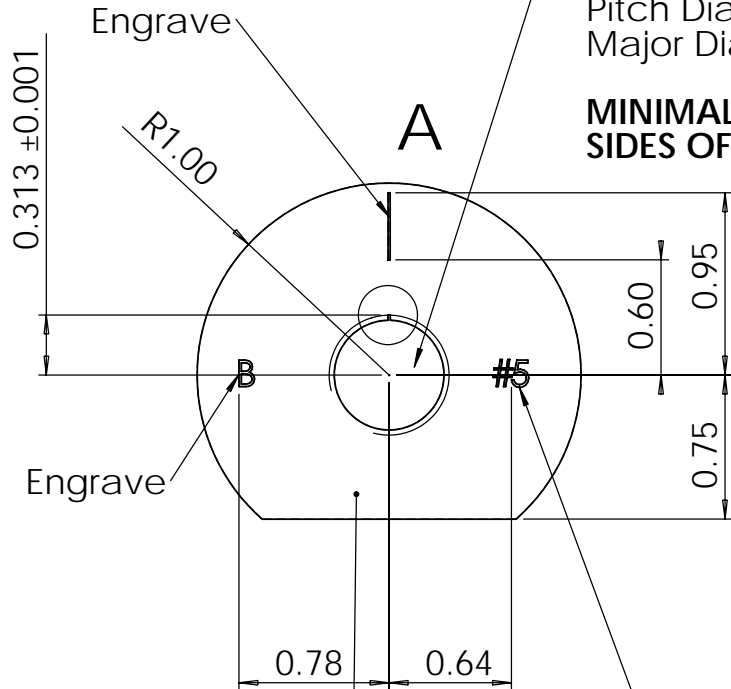


SINGLE POINT TURN ID AND THREAD! DO NOT USE THREADMILL!

Tap 0.625-18UNF-2B
 Minor Dia: 0.565-0.578
 Pitch Dia: 0.5889-0.5949
 Major Dia: 0.625 MINIMUM

CUT NOTCH 0.12" WIDE x 0.027" DEEP
 MUST BE BURR FREE, USE EDM. A GO
 THREAD GAGE MUST ROTATE SMOOTHLY
 FULL LENGTH OF THREAD.

MINIMAL CHAMFER ON BOTH
 SIDES OF THE TAPPED HOLE!



Engrave Serial #

PROPRIETARY AND CONFIDENTIAL
 THE INFORMATION CONTAINED IN THIS
 DRAWING IS THE SOLE PROPERTY OF
 ETOGEN SCIENTIFIC. ANY REPRODUCTION
 IN PART OR AS A WHOLE WITHOUT THE
 WRITTEN PERMISSION OF ETOGEN
 SCIENTIFIC IS PROHIBITED.

		DIMENSIONS ARE IN INCHES TOLERANCES: FRACTIONAL ± 1/32 ANGULAR: MACH ± BEND ± TWO PLACE DECIMAL ± 0.02 THREE PLACE DECIMAL ± 0.003		NAME AO	DATE 4/10/05	MCU Designs VP Calibration Standard Paintball/SpareAir 0.625" #5
		MATERIAL 6061 Aluminum		CHECKED		
		FINISH Anodize Black		ENG APPR.		
NEXT ASSY		USED ON		MFG APPR.		
APPLICATION		DO NOT SCALE DRAWING		Q.A.		
				COMMENTS: BREAK ALL EXTERNAL SHARP EDGES UNLESS NOTED. ENGRAVING FONT IS NOT IMPORTANT. USE 1/16" BALL END MILL, 0.01" DEEP.		SIZE A
				DWG. NO. VP-3002		REV. C
				SCALE: 1:1		WEIGHT:
						SHEET 1 OF 1